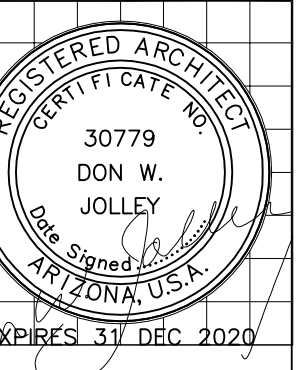




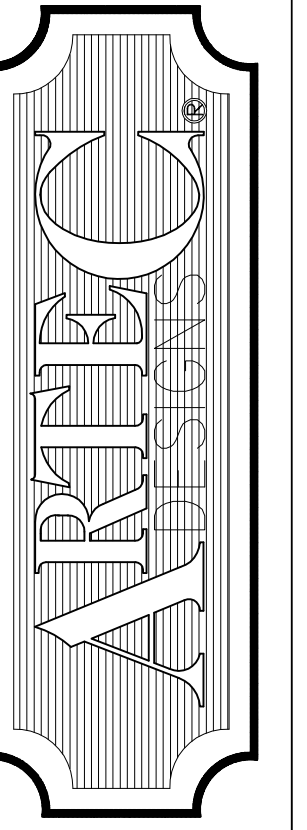
VIEW FROM FLORIAN AVE.



VIEW FROM GREENFIELD RD

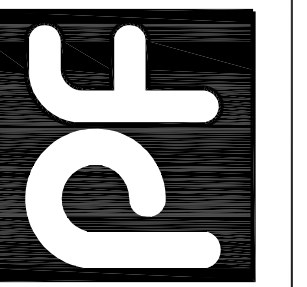


DON W. JOLLEY
ARCHITECT
 480.560.7554
 artecdesigns@aol.com



AQUA TOTS
 1110 S. Greenfield Road Mesa, AZ 85206

pf design group
 PFDdesigngroup@outlook.com 480-368-8119



THESE DRAWINGS ARE
 UNLESS OTHERWISE
 NOTED, AND MAY
 BE REPRODUCED OR
 COPIED IN ANY
 MANNER WITHOUT
 PERMISSION FROM
 P.F. DESIGN-ART-TEC DESIGNS.
 GENERAL CONTRACTOR
 SHALL FIELD VERIFY
 DIMENSIONS BEFORE
 CONSTRUCTION.

Scale: AS NOTED

Drawn:

Job:

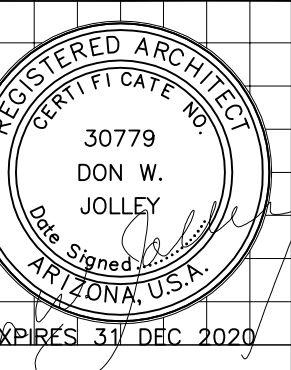
Sheet

Of **A9** Sheets

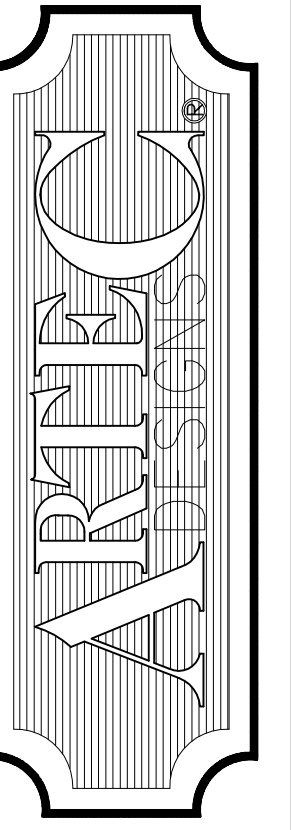
DUTCH BROS



DUTCH BROS

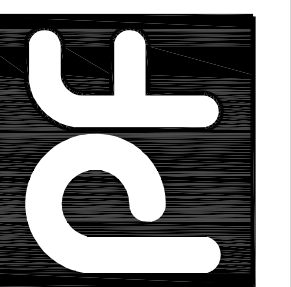


DON W. JOLLEY
ARCHITECT
480.560.7554
artecdesigns@aol.com



AQUA TOTS
1110 S. Greenfield Road Mesa, AZ 85206

pf design group
Pfdesigngroup@outlook.com 480-368-8119



THESE DRAWINGS ARE
COPYRIGHTED AND MAY
NOT BE REPRODUCED
IN ANY MANNER
WITHOUT THE WRITTEN
PERMISSION FROM
P.F. DESIGN-ARTEC DESIGNS
GENERAL CONTRACTOR
SHALL FIELD VERIFY
DIMENSIONS BEFORE
CONSTRUCTION.

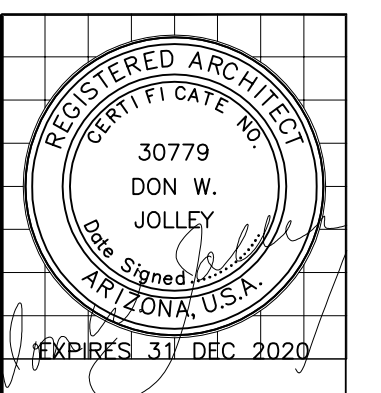
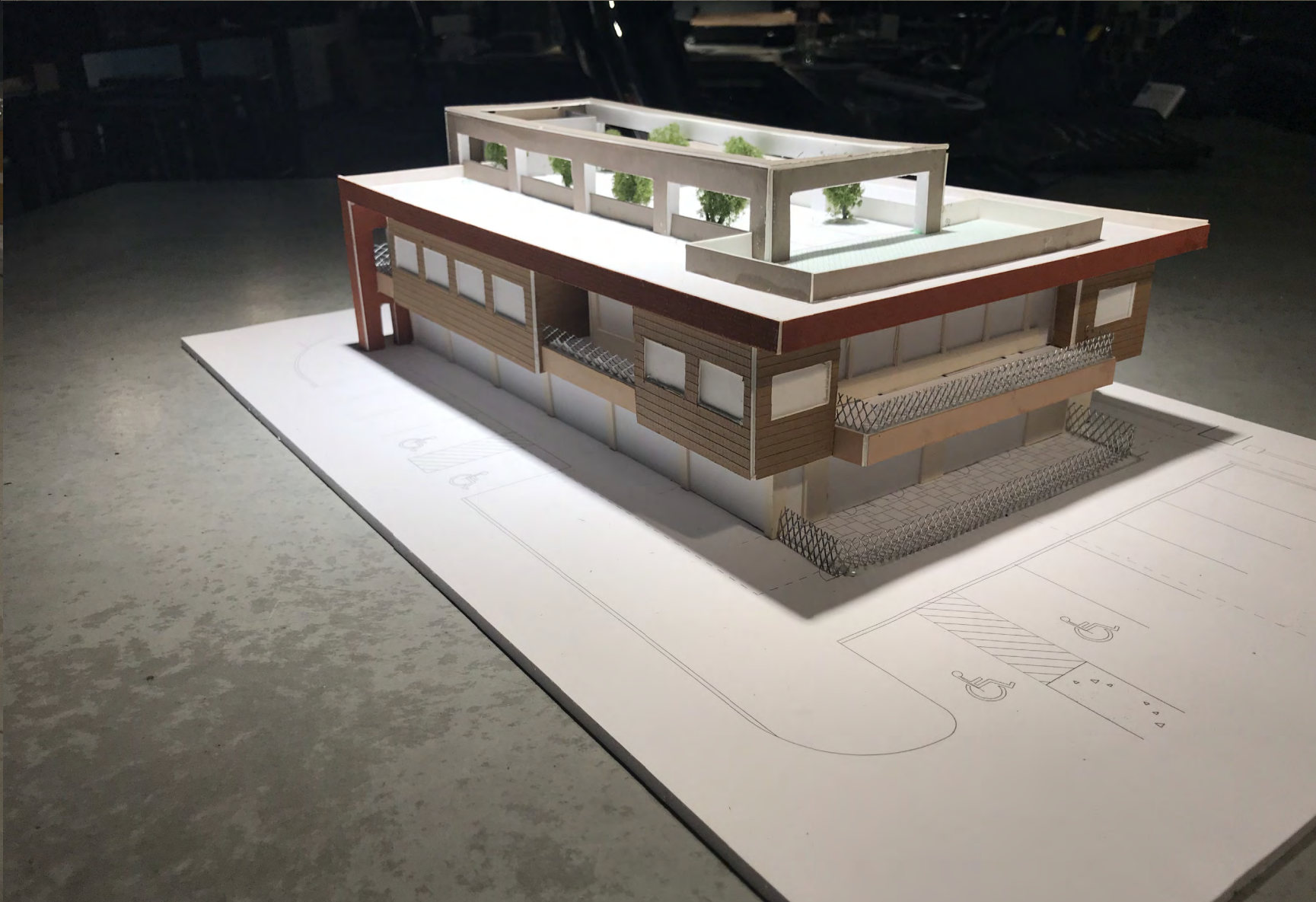
Scale: AS NOTED

Drawn:

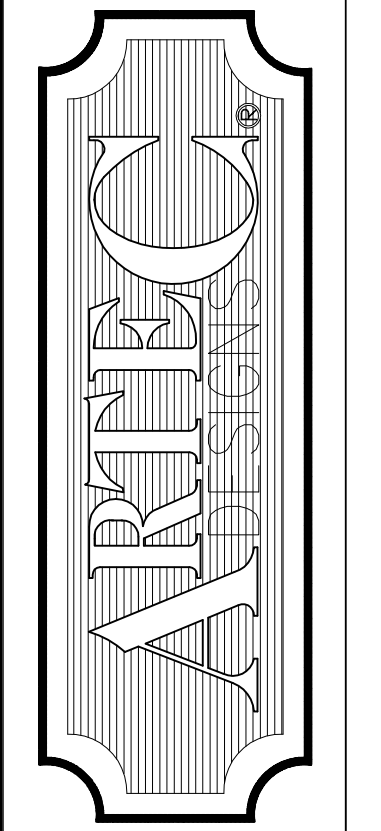
Job:

Sheet

A10
Of Sheets

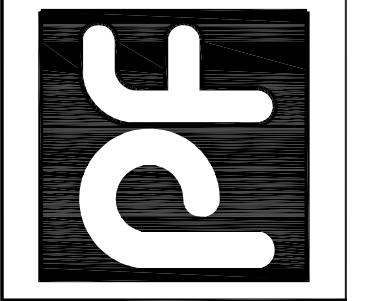


DON W. JOLLEY
ARCHITECT
480.560.7554
artecdesigns@aol.com



AQUA TOTS
1110 S. Greenfield Road Mesa, AZ 85206

design group
Pdesigngroup@outlook.com 480-586-8119



THESE DRAWINGS ARE
COPYRIGHTED AND MAY
NOT BE REPRODUCED OR
USED IN ANY MANNER
WITHOUT THE WRITTEN
PERMISSION FROM
P.F. DESIGN-ARTEC DESIGNS
GENERAL CONTRACTOR
SHALL FIELD VERIFY
DIMENSIONS BEFORE
CONSTRUCTION.

Scale: AS NOTED

Drawn:

Job:

Sheet
Of **A11**
Sheets

NARRATIVE

This project is to be the world headquarters for Aqua-Tots. They will be using nearly 7,600 square feet and the remainder, the greater part of the first floor to be retail shops. This creates a mixed-use project.

The building modernizes the existing shopping center, but maintains some of the elements of the existing strip building that houses one of the Aqua-Tots swim schools. A mix of materials and colors to help bring life to the complex, it also incorporates a 3,452 roof deck garden space with trees and turf for outdoor meetings, gatherings, or break area. There is also a ground level patio using more of the space expanding the use of the building. It shaded by the roof and surrounded by greenery.

With the updated materials and colors and the “green” roof garden that uses a normally unused area of a building this project is a positive addition to the complex and the City of Mesa.